



Application of Stable Isotope Analysis and acoustic telemetry to understand the ecological niche of *Raja undulata* in NW of Spain

Paula Dabán Losada

Master in Marine Biology - University of Vigo

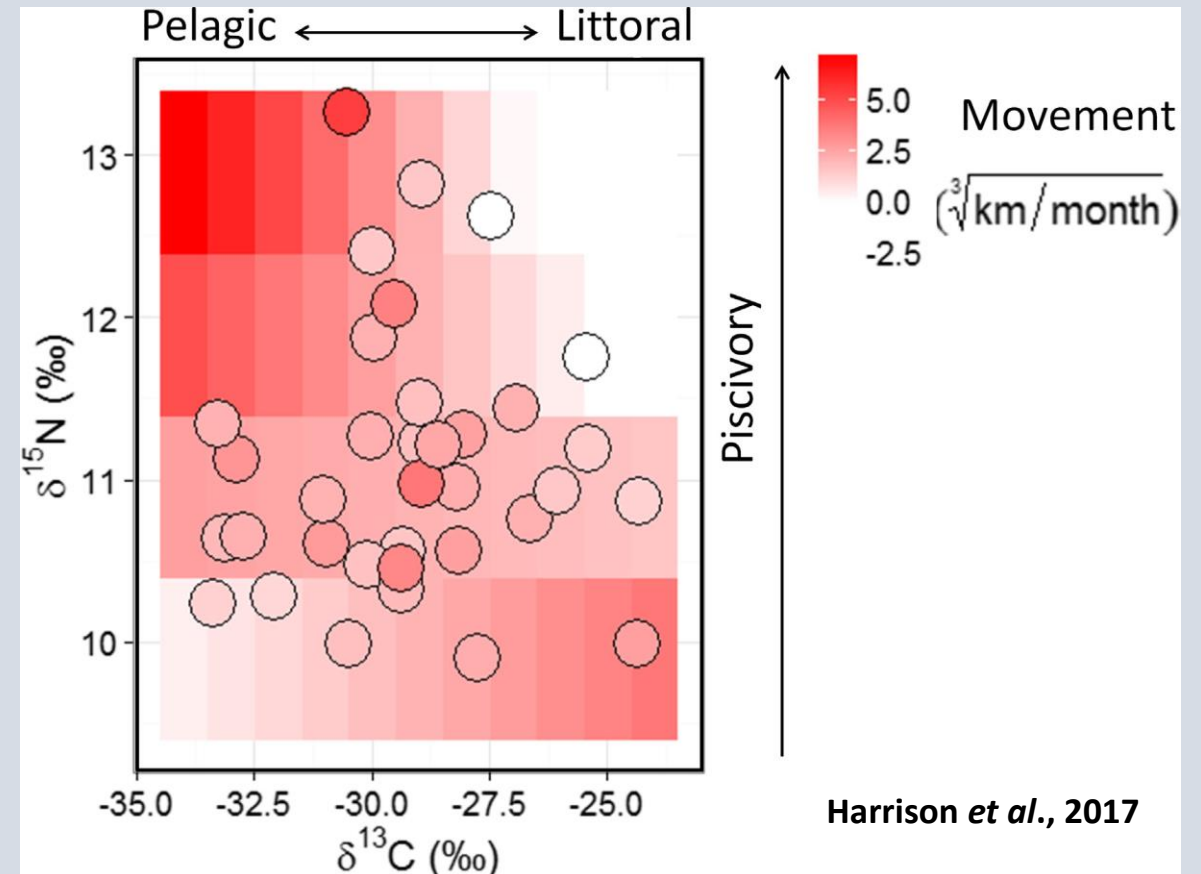


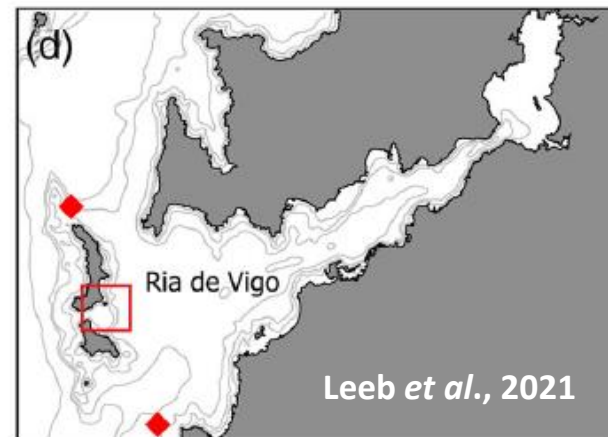
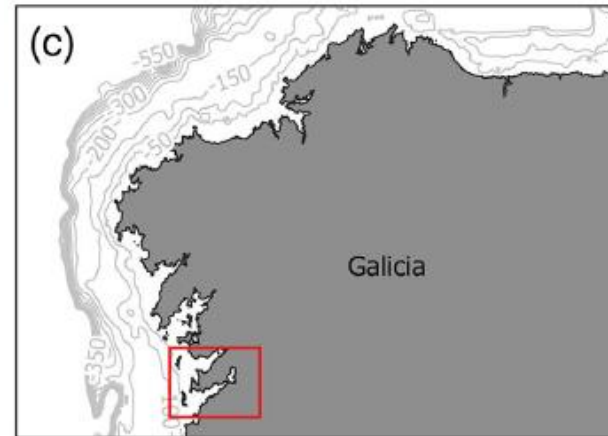
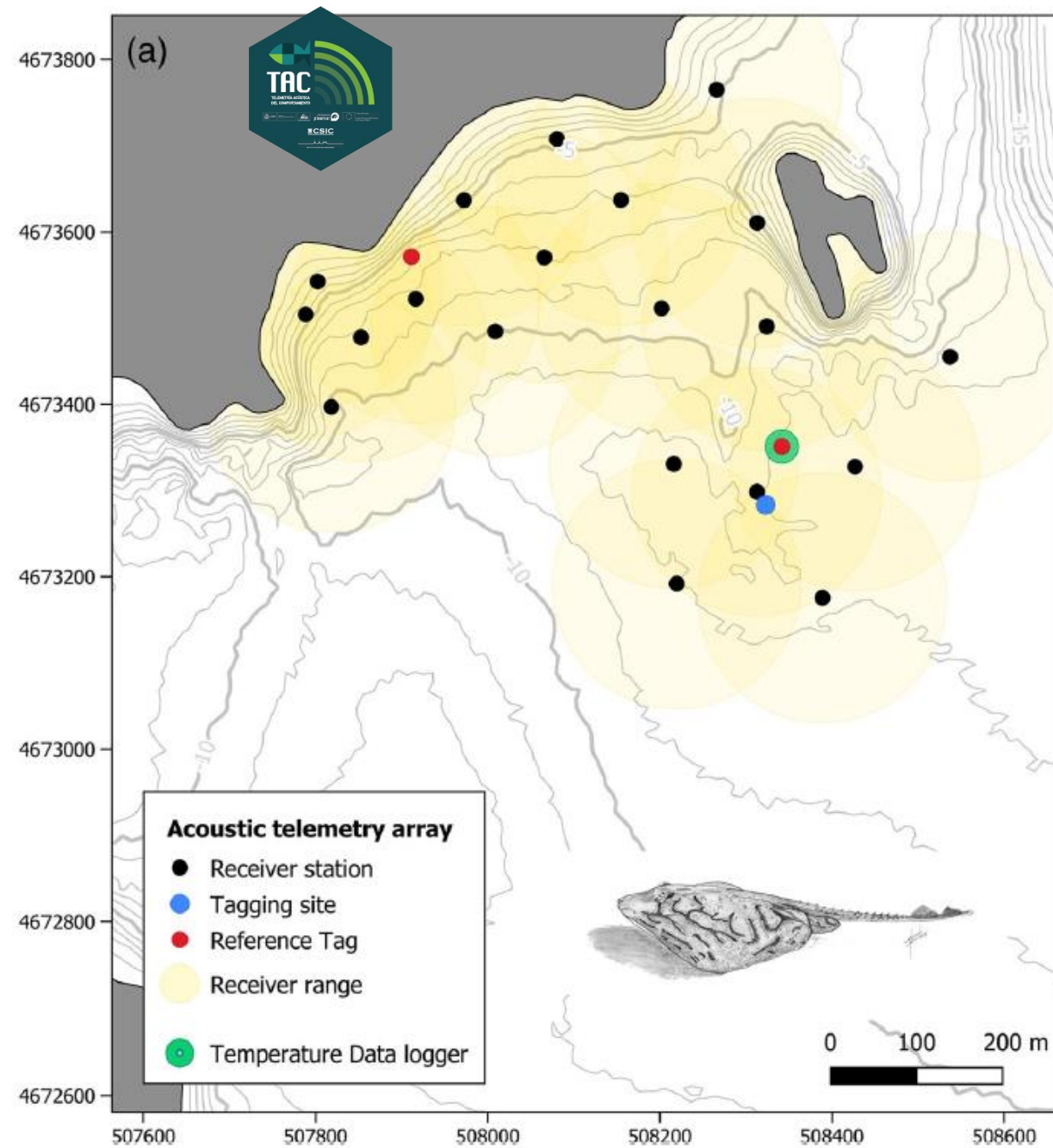
Fisheries Ecology Group
IIM-CSIC

<http://pesqueras.iim.csic.es>
@FisheriesIIM

Hypothesis

Isotopic composition predicts subsequent individual movement patterns in a local aggregation of *Raja undulata*





Monitoring *Raja undulata* with Acoustic telemetry within a MPA (Cies Islands, NW Spain)

- “Resident” individuals
- “Mobile” individuals

Movement traits

- home range
- % fidelity
- Activity
- Distance covered

- 138 Fin clip samples (2019 – 2021) – slow turn-over rate
- Database: Size (Total Length and Disc Length), sex and date

With this course....

- Improve my knowledge of Bulk SIA (data analysis and results correction)
- Gain better understanding of CSIA (sample preparation and data analysis)
- Learn from different projects new ideas and approaches to my research