



CENTRO DE ASTROBIOLOGÍA
ASOCIADO AL NASA ASTROBIOLOGY INSTITUTE



CSIC



EXCELENCIA
MARÍA DE
MAEZTU

Microbial ecology from extreme environments

María Ángeles Lezcano Vega

Postdoctoral researcher

Centro de Astrobiología (CSIC-INTA)

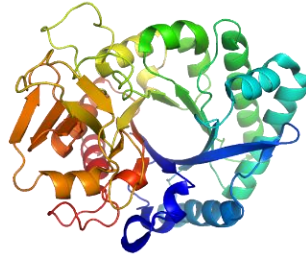
mangeles.lezcano@cab.inta-csic.es

mangeles.lezcano@gmail.com

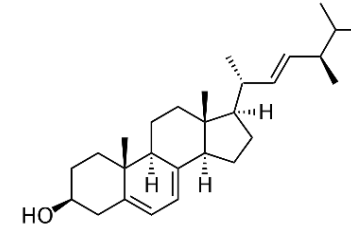
Molecular tools



DNA



Proteins



Lipids

Taxonomic specificity

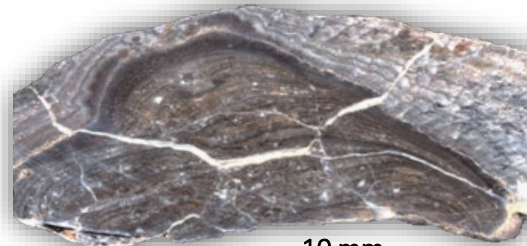
Preservation

Modern/fresh samples



Microbial mats (Prieto-Barajas, 2018)

Ancient samples



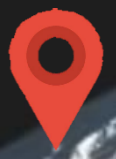
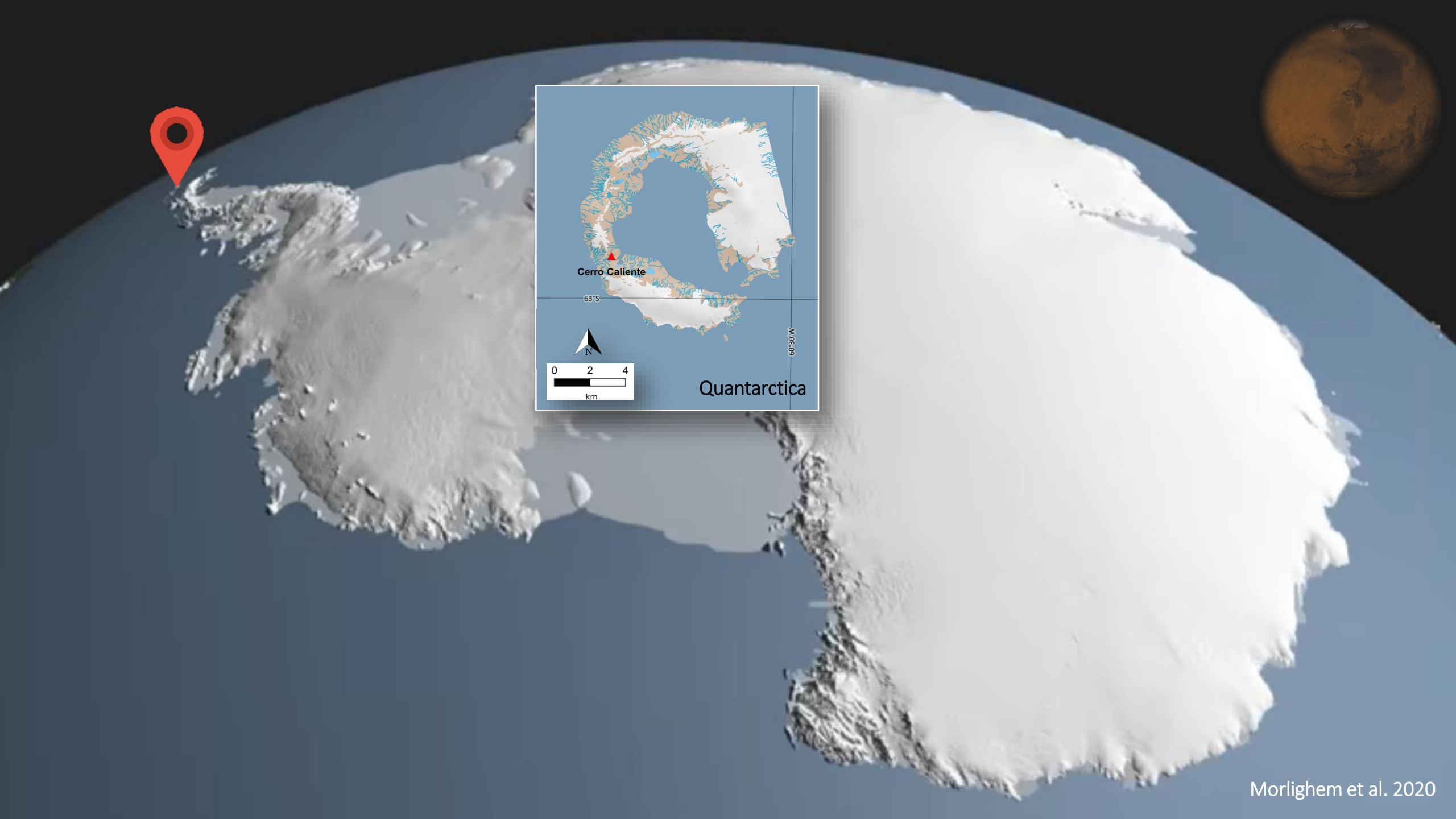
10 mm



10 mm

Stromatolites from Cotici lacustrine deposits (Italy) (Tunis et al. 2011)

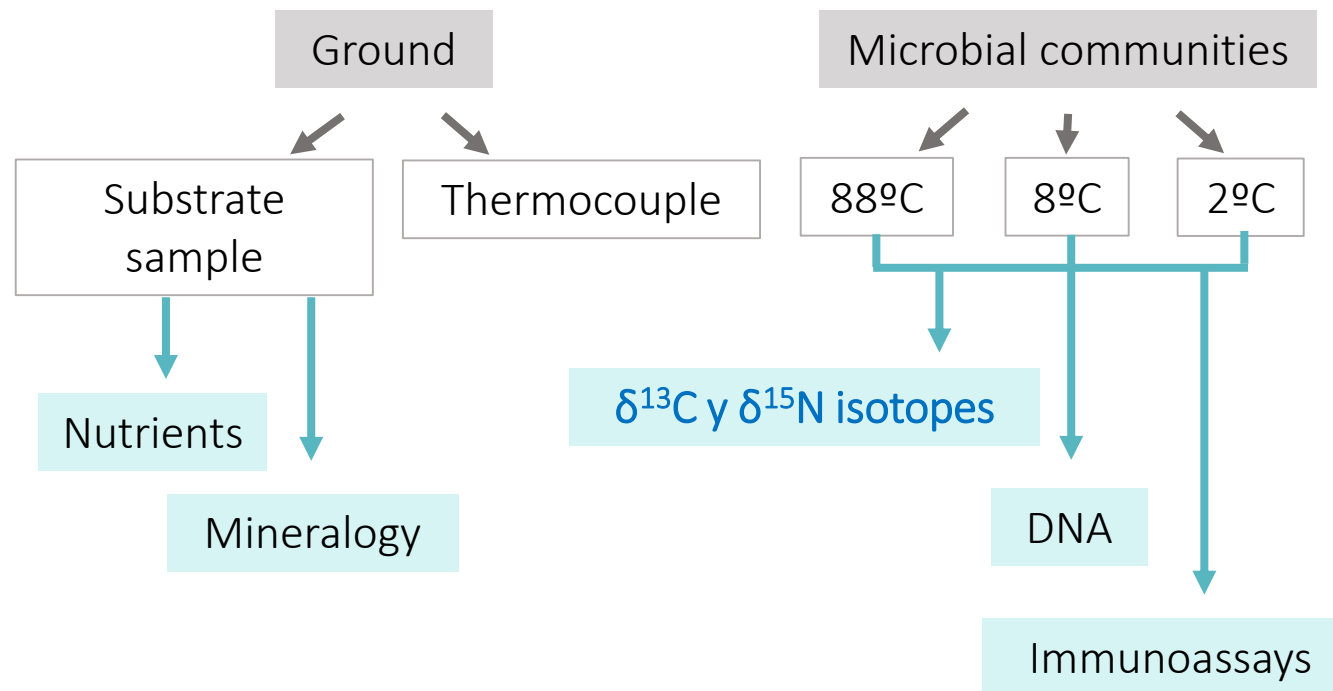
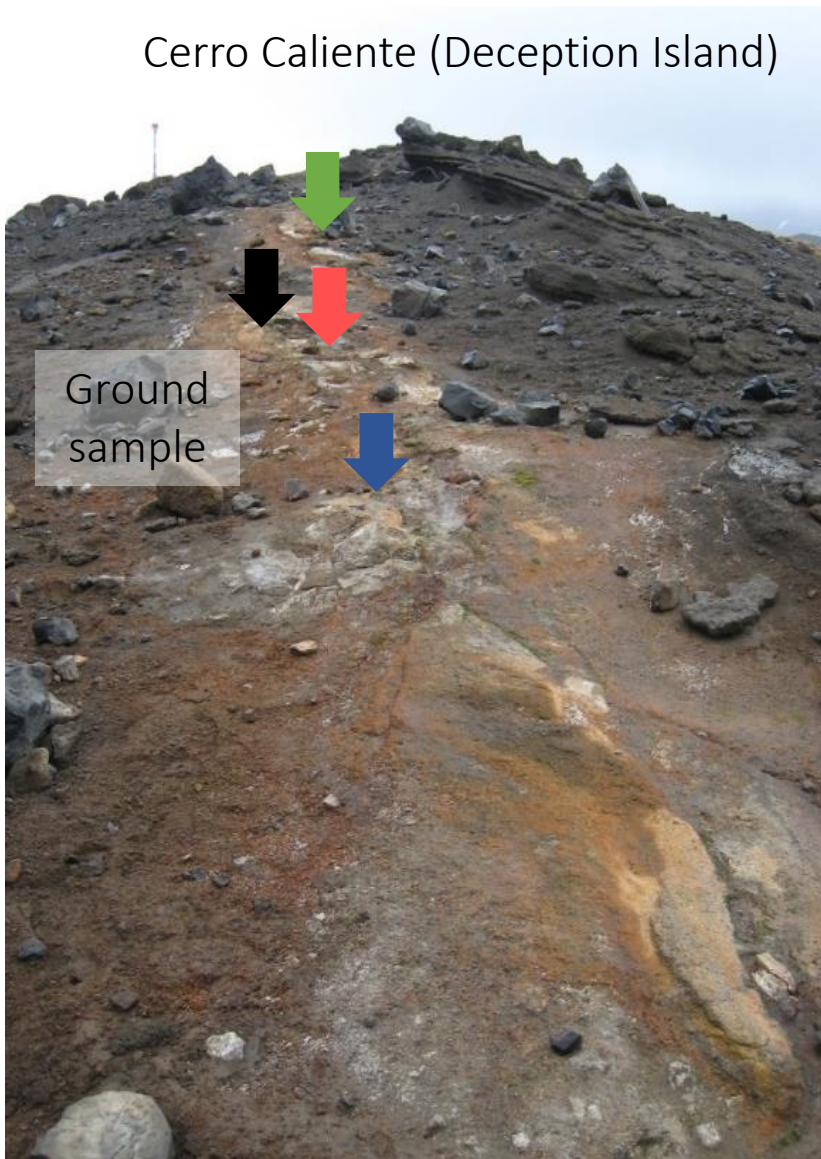




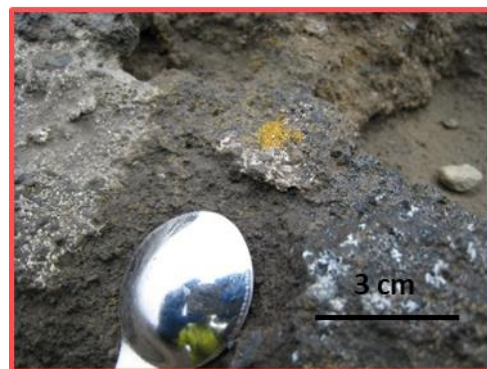
Geothermal environment

Sampling: 2 February 2012

Cerro Caliente (Deception Island)



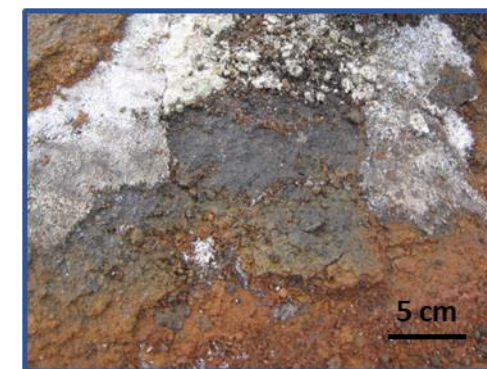
88 °C



8 °C



2 °C

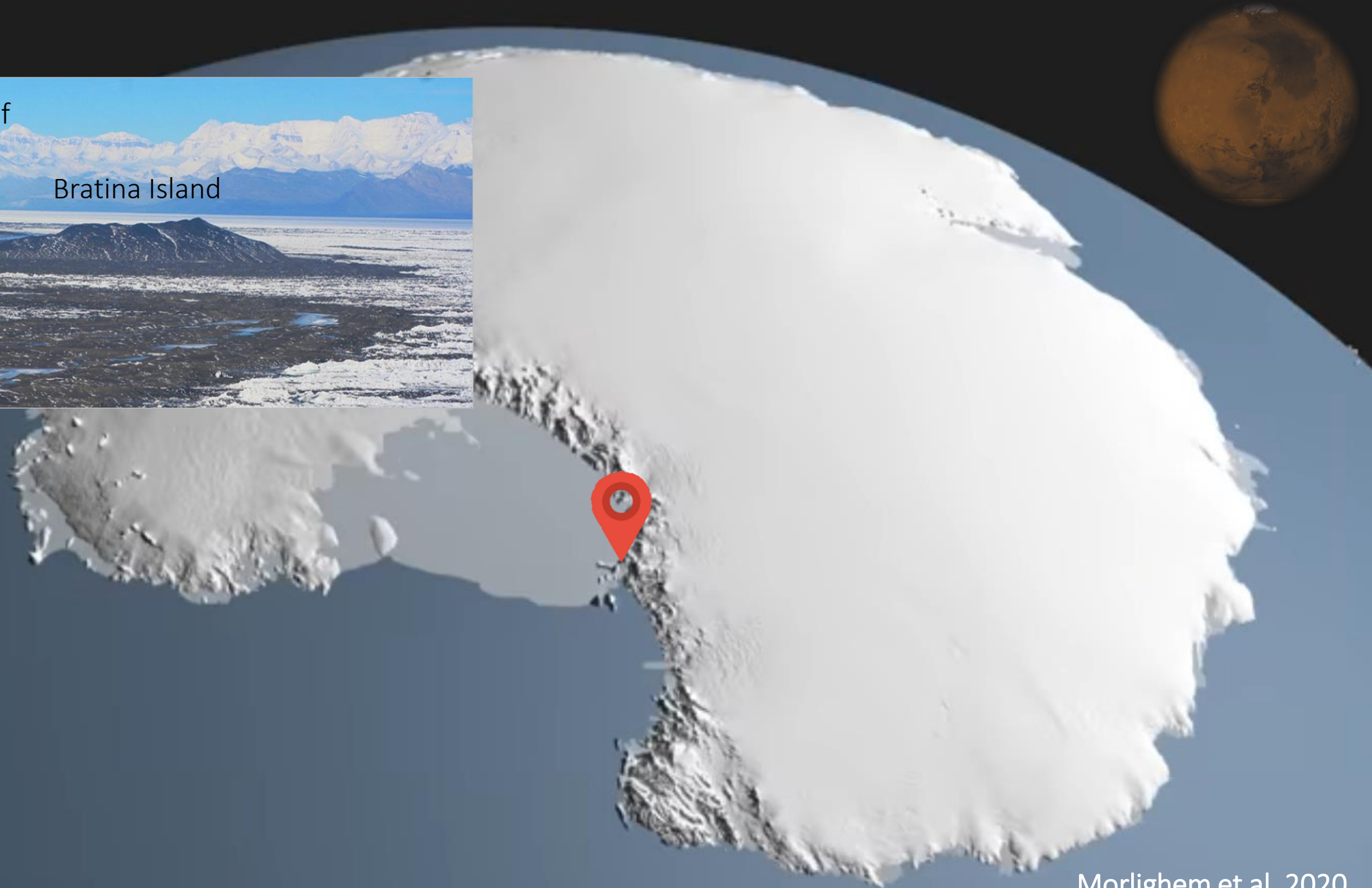


McMurdo Ice Shelf

Bratina Island



Hawes et al. 2018

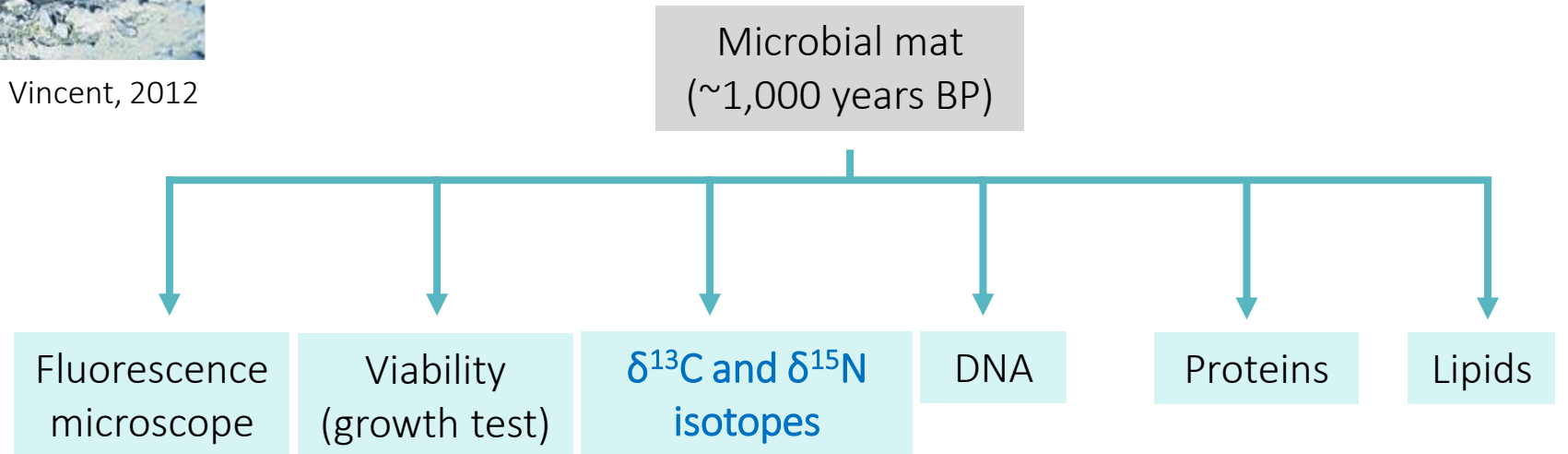


Morlighem et al. 2020

Cold and dry environment



Quesada and Vincent, 2012





CENTRO DE ASTROBIOLOGÍA
ASOCIADO AL NASA ASTROBIOLOGY INSTITUTE



CSIC



EXCELENCIA
MARÍA DE
MAEZTU

Thanks for your attention!

María Ángeles Lezcano Vega

Postdoctoral researcher

Centro de Astrobiología (CSIC-INTA)

mangeles.lezcano@cab.inta-csic.es

mangeles.lezcano@gmail.com